

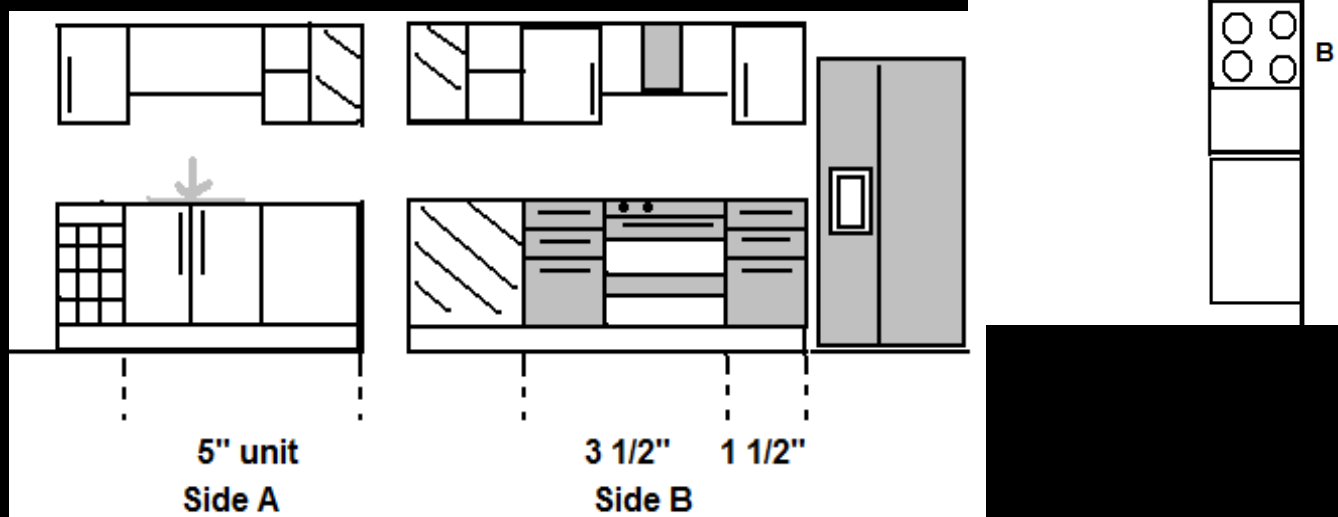
WORKING TOGETHER TO CREATE YOUR DREAM



Val wrote to us to ask if she could use the FLEXI kit to create a kitchen similar to the one she had seen on our website in black and steel, to fit the room in her Malibu Beach House®.

She wanted to include the ELF American style fridge freezer, and add a wine rack that wasn't in the original photo (nor, at that time, was it available in the EAZY range which is compatible

with the FLEXI kit!). However, we always try and help whenever possible, so we added a wine unit to the EAZY range, and therefore included it in the plan for Val. I drew up a couple of alternative plans, from which Val chose the one shown on the right and below.



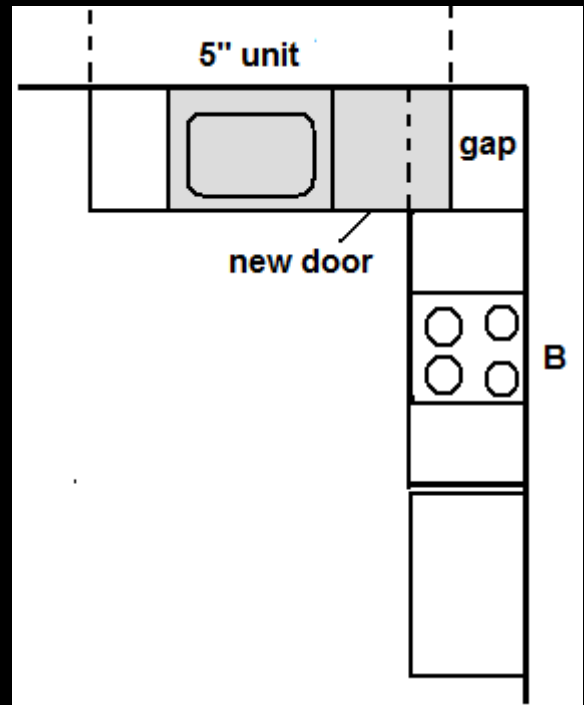
The basic FLEXI Base kit comprises three blocks, one 5" long, one 3 1/2" and one 2", while the Wall unit kit comprises six individual units plus a corner unit. As you can see from the drawing the two larger base blocks remained, while I reduced the two inch unit to 1 1/2" for one of the sets of drawers. I reduced the size of the standard drawer fronts from 2" to 1 1/2" and cut the second set of drawers from the spare doors which Val wouldn't need (one from the Base kit - Val wanted a built in oven, achieved by substituting an EAZY oven front for one of the doors - the other from the Wall Unit kit as Val only needed three of the doors).

In this way, Val was able to use the basic FLEXI Base and Wall kits to create her kitchen, and the only extras she needed were the EAZY oven front and the wine rack.

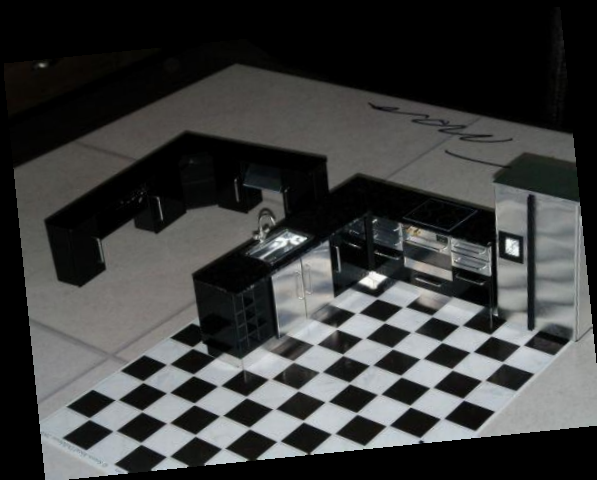
Val started to make her kitchen, and once she had the basic units assembled she realised that by moving the long block a little to the left she could add another door and create an extra base "unit", and as she already had a spare wall unit from the original Wall kit, all she needed to do was cut a longer worktop section to cover the gap in the corner of the base units (the FLEXI kit includes an 18" length of worktop, so no problem there) and order a new door for the base unit.

Once Val had her kitchen in place, she decided she had room to create a simple island. She already had some wood to make the base, but needed a top to match the other worktops, so we cut her a top wide enough to create a breakfast bar.

Although the FLEXI kit includes an extractor fan kit, Val decided she wanted to create something a little different, so she used a spare door, with the aluminium sheet from the original extractor kit to make the sloping contemporary extractor unit you can see in the finished kitchen.



Val now had her kitchen built...



...and fitted into the house, but of course it still needed the accessories.

After carefully sourcing them, she has completed the kitchen, and the results are stunning!

She added an ELF "glass" dining table and four replica Le Corbusier dining chairs to the alcove, and two chrome stools for the breakfast bar. The touches of red soften the severity of the black and white, and "lift" the whole design, adding the perfect finishing touch as you can see on the next page.





Congratulations Val!

Val wrote, "Thank you, but it was with a lot of your help that I got the kitchen I wanted... you have the ability to turn the rough plans we have in our minds into complete reality for us! I am so proud of this kitchen, it's turned out much better than I had imagined..."



"...everything you do looks so like real life! You are very clever too at unravelling our muddled minds and descriptions to visualise what we do really want! I look forward to working with you again soon."



If you would like ELF to help you create the kitchen of YOUR dreams, just send us an email outlining your ideas. Together we can realise your dream!